

53/189

A PART OF MISSION BAY, A P.U.D.

TRACT L

A REPLAT OF ALL OF TRACT L OF THE PLAT OF MISSION BAY, A P.U.D., AS RECORDED IN PLAT BOOK 53, PAGES 112-120, OF THE PUBLIC RECORDS OF PALM BEACH COUNTY, FLORIDA.
SECTION 13 - TOWNSHIP 47S - RANGE 41E
SHEET 2 OF 2 NOVEMBER, 1985

189



SCALE: 1" = 20'

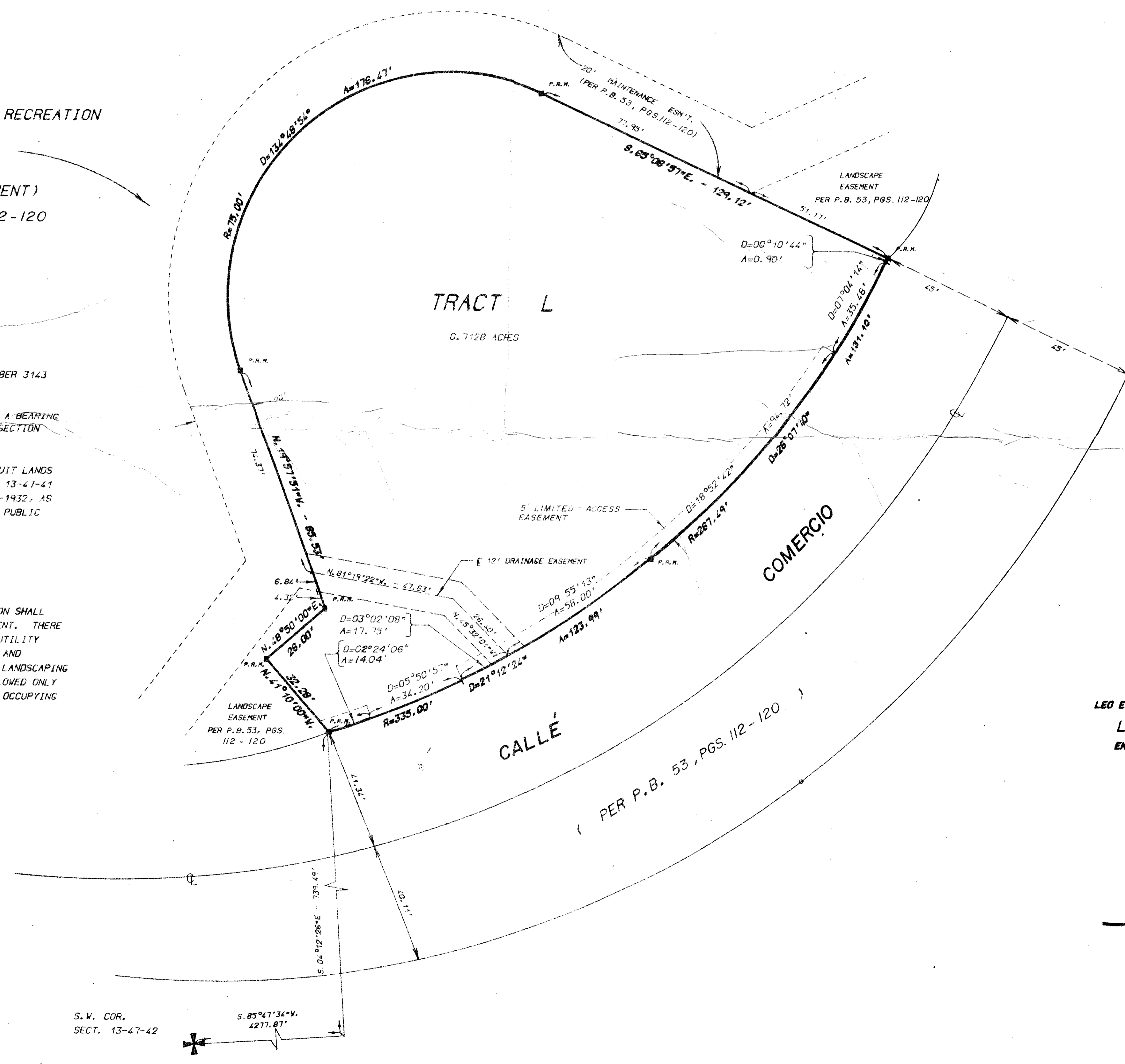
WATER MANAGEMENT & RECREATION

TRACT NO. 3

(DRAINAGE EASEMENT)
PER P.B. 53, PGS. 112-120

SURVEYOR'S NOTES

- 1.) ALL P.R.M.'s BEAR THE REGISTRATION NUMBER 3143 SHOWN THUS - ■ P.R.M.
- 2.) THE BEARINGS SHOWN HEREON ARE BASED ON A BEARING OF N.00°54'39"W. ON THE EAST LINE OF SECTION 13-47-41.
- 3.) ROADWAYS WITHIN THE PLAT OF FLORIDA FRUIT LANDS COMPANY'S SUBDIVISION NO. 2 OF SECTION 13-47-41 WERE ABANDONED PER RESOLUTION NO. R-64-1932, AS RECORDED IN BOOK 4438, PAGE 1770-1773, PUBLIC RECORDS OF PALM BEACH COUNTY, FLORIDA.
- 4.) NO BUILDINGS OR ANY KIND OF CONSTRUCTION SHALL BE PLACED ON UTILITY OR DRAINAGE EASEMENT. THERE SHALL BE NO TREES OR SHRUBS PLACED ON UTILITY EASEMENTS WHICH ARE PROVIDED FOR WATER AND SEWER USE OR UPON DRAINAGE EASEMENTS. LANDSCAPING ON OTHER UTILITY EASEMENTS SHALL BE ALLOWED ONLY AFTER CONSENT OF ALL UTILITY COMPANIES OCCUPYING SAME.
- 5.) D - INDICATES CENTRAL ANGLE.
- 6.) A - INDICATES ARC DISTANCE.
- 7.) R - INDICATES RADIUS.
- 8.) (N.R.) - INDICATES NON-RADIAL LOT LINE.



THIS INSTRUMENT PREPARED BY:
LEO E. NOBLE P.L.S. 3143 STATE OF FLORIDA
LAWSON & NOBLE, INC.
ENGINEERS - PLANNERS - SURVEYORS
LAKE WORTH, FLORIDA

0454 009

TRACT L
53/189

DRAWING NUMBER
PLAN HOLD CORPORATION • IRVINE, CALIFORNIA
RECORDED BY NUMBER 07348